

What is Storm Water?

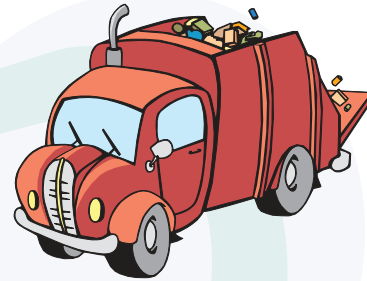
Storm water is water from precipitation that flows across the ground and pavement when it rains or when snow and ice melt. The water seeps into the ground or drains into what we call storm sewers. These are the drains you see at street corners or at low points on the sides of streets. Collectively, the draining water is called storm water runoff.

Why is Storm Water "Good Rain Gone Wrong?"

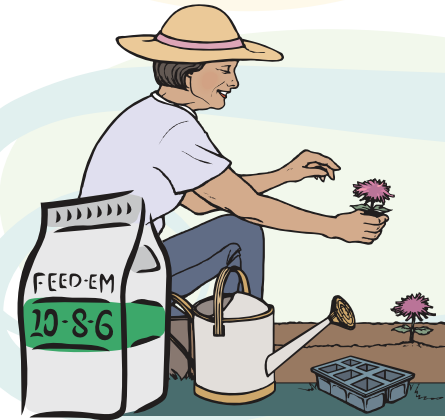
Storm water becomes a problem when it picks up debris, chemicals, dirt, and other pollutants as it flows or when it causes flooding and erosion of stream banks. Storm water travels through a system of pipes and roadside ditches that make up storm sewer systems. It eventually flows directly to a lake, river, stream, wetland, or coastal water. All of the pollutants storm water carries along the way empty into our waters, too, because storm water does not get treated!



Pet wastes left on the ground get carried away by storm water, contributing harmful bacteria, parasites and viruses to our water.



Vehicles drip fluids (oil, grease, gasoline, antifreeze, brake fluids, etc.) onto paved areas where storm water runoff carries them through our storm drains and into our water.



Chemicals used to grow and maintain beautiful lawns and gardens, if not used properly, can run off into the storm drains when it rains or when we water our lawns and gardens.

Waste from chemicals and materials used in construction can wash into the storm sewer system when it rains. Soil that erodes from construction sites causes environmental degradation, including harming fish and shellfish populations that are important for recreation and our economy.



Leaf Collection

LEAVES MAY NOT BE PLACED OUT FOR REFUSE COLLECTION OCTOBER THROUGH DECEMBER.

Leaf collection on all dedicated roads and streets is scheduled to start on the second Monday of October and continue for nine weeks or until the first significant snow fall. Leaves should be placed in the gutter for collection. Leaves should not be placed out in bags or containers. Leaves in bags or containers will not be picked up at this time. The leaf collection crew will work through the Township on a continuing basis without a published day and area schedule. Leaves may be placed in regular refuse containers January through September. Township residents are encouraged to mulch or compost leaves at their residences if possible.

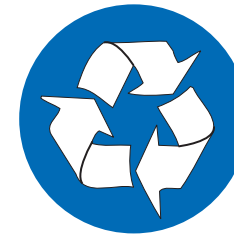
Christmas Tree Drop Off

Residents can drop Christmas trees at "Tree Drop" signs located at the Warren Recreation Parking Lot, Gouglerstown and Grill Fire Stations, the Montrose Manor Playground, the Pennwyn Playground (lower level parking lot on Wyomissing Avenue), Augusta Lane in Flying Hills, the rear of Giant, on Harding Avenue, between Tioga Avenue and Bradford Avenue. Look for the signs. Trees may be dropped off at these points until January 28, 2011. Wood chips resulting from the trees are available to residents of the Township on a first call basis. For further information, contact the Township Office.

TOWNSHIP INFORMATION

Administration – (610) 777-1343
Police Department Administration – (610) 777-9595
Sewer Department – (610) 777-1343
Tax Collector – (610) 775-8834

**Recycle!
It's good for you.
It's the law!
Ordinance # 676**



YARD WASTE FACILITY NOW OPEN ... DETAILS INSIDE

TOWNSHIP OF CUMRU
BERKS COUNTY, PENNSYLVANIA
1775 WELSH ROAD
MOHNTON, PA 19540
www.cumrutownship.com



Trash/Refuse Collection

Collection shall be once a week for normal, everyday household refuse. Please refer to the attached "Trash Schedule" and color code to determine the collection days for your household.

Each container should not weigh more than 75 lbs. or measure any longer than four feet. All loose items such as cardboard, etc. must be bundled or tied together. Trash/refuse containers shall be kept away from the vicinity of mailboxes. Residents are cautioned not to attempt to put too much refuse in the thinner plastic bags that may rip when lifted. Care should be taken to ensure that only cold ashes are placed out for pickup. Each metal or plastic container should not exceed 30-gallon capacity and should be equipped with two handles. Refuse shall not be placed in cardboard boxes. Each collection is limited to six bags or cans.

Brush/Yard Waste 2011

There will be two curbside "brush/yard waste" pickups during 2011. The schedule is as follows:

If your trash day is Monday: pickup will be Sat., April 2, 2011 and Sat., October 1, 2011

If your trash day is Tuesday: pickup will be Sat., April 9, 2011 and Sat., October 8, 2011

If your trash day is Wednesday: pickup will be Sat., April 16, 2011 and Sat., October 15, 2011

If your trash day is Thursday or Friday: pickup will be Sat., April 23, 2011 and Sat., October 22, 2011

Please Note:

- All brush/yard waste must be set out the night prior to collection. There will be no re-run routes.**
- All brush/yard waste is to be in kraft bags (biodegradable bags) or tied securely with rope or twine not to exceed two (2) feet in diameter, and three (3) feet in length. No wood over four (4) inches in diameter will be taken because of possible damage to trucks. No bundles or bags weighing over forty (40) pounds.
- The limit per household is 12 bags or bundles.
- No firewood, stumps, dirt, or rocks will be taken as part of this collection.

Recycling Collection

Recycling collection shall continue to be every other week. Please refer to the attached "Recycling Schedule" and color code to determine the collection days for your household.

Items to be placed in the blue and yellow recycling container include: clear, brown and green glass; aluminum, steel and bimetal cans; and plastics marked 1 PETE or 2 HDPE on the bottom. Badly damaged containers may be exchanged for new containers at the Township Office, 1775 Welsh Rd., Mohnton, PA. The containers are the property of the Township and should remain with the dwelling in the event that the residents move. Excess glass/metal/plastic recycling may be placed in a plastic or metal 2-handled container clearly marked "Recycling."

Items to be placed next to the blue and yellow recycling container include black-and-white newsprint, magazines, and phone books. These items should be tied or placed in a brown paper bag.

Trash/refuse should be ready for collection starting at 6:30 a.m. Collection may continue until dusk.

Holiday Rules

Trash and recycling collections shall not be made on the following holidays: New Year's Day, Memorial Day, Independence Day, Labor Day, Thanksgiving, and Christmas. When a holiday falls on a Monday or Tuesday, collection shall be made on the prior Saturday. When a holiday falls on a Wednesday, Thursday, or Friday, collection shall be made on the following Saturday. These changes are reflected in the trash and recycling schedules. Residents scheduled for a Saturday collection may want to place their items curbside on Friday evening.

If you experience any problems with your trash or recycling collection, call the Township Office during the next business day at **(610) 777-1343**.

Trash/Refuse Schedule 2011



JANUARY							FEBRUARY							MARCH						
S	M	T	W	T	F	S	S	M	T	W	T	F	S	S	M	T	W	T	F	S
						1			1	2	3	4	5			1	2	3	4	5
2	3	4	5	6	7	8	6	7	8	9	10	11	12	6	7	8	9	10	11	12
9	10	11	12	13	14	15	13	14	15	16	17	18	19	13	14	15	16	17	18	19
16	17	18	19	20	21	22	20	21	22	23	24	25	26	20	21	22	23	24	25	26
23	24	25	26	27	28	29	27	28						27	28	29	30	31		
30	31																			

APRIL							MAY							JUNE						
S	M	T	W	T	F	S	S	M	T	W	T	F	S	S	M	T	W	T	F	S
					1	2	1	2	3	4	5	6	7				1	2	3	4
3	4	5	6	7	8	9	8	9	10	11	12	13	14	5	6	7	8	9	10	11
10	11	12	13	14	15	16	15	16	17	18	19	20	21	12	13	14	15	16	17	18
17	18	19	20	21	22	23	22	23	24	25	26	27	28	19	20	21	22	23	24	25
24	25	26	27	28	29	30	29	30	31					26	27	28	29	30		

JULY							AUGUST							SEPTEMBER							
S	M	T	W	T	F	S	S	M	T	W	T	F	S	S	M	T	W	T	F	S	
					1	2			1	2	3	4	5	6					1	2	3
3	4	5	6	7	8	9	7	8	9	10	11	12	13	4	5	6	7	8	9	10	
10	11	12	13	14	15	16	14	15	16	17	18	19	20	11	12	13	14	15	16	17	
17	18	19	20	21	22	23	21	22	23	24	25	26	27	18	19	20	21	22	23	24	
24	25	26	27	28	29	30	28	29	30	31				25	26	27	28	29	30		
31																					

OCTOBER							NOVEMBER							DECEMBER						
S	M	T	W	T	F	S	S	M	T	W	T	F	S	S	M	T	W	T	F	S
						1			1	2	3	4	5					1	2	3
2	3	4	5	6	7	8	6	7	8	9	10	11	12	4	5	6	7	8	9	10
9	10	11	12	13	14	15	13	14	15	16	17	18	19	11	12	13	14	15	16	17
16	17	18	19	20	21	22	20	21	22	23	24	25	26	18	19	20	21	22	23	24
23	24	25	26	27	28	29	27	28	29	30				25	26	27	28	29	30	31
30	31																			

PLEASE PLACE ITEMS OUT THE NIGHT BEFORE

SPRING CLEANUP
 If your trash pickup is Monday (purple).....Spring Cleanup is Monday, May 2, 2011
 If your trash pickup is Tuesday (blue).....Spring Cleanup is Tuesday, May 10, 2011
 If your trash pickup is Wednesday (yellow).....Spring Cleanup is Wednesday, May 18, 2011
 If your trash pickup is Thursday (green).....Spring Cleanup is Thursday, May 26, 2011
 If your trash pickup is Friday (red).....Spring Cleanup is Friday, May 27, 2011

FALL CLEANUP
 If your trash pickup is Monday (purple).....Fall Cleanup is Monday, October 3, 2011
 If your trash pickup is Tuesday (blue).....Fall Cleanup is Tuesday, October 11, 2011
 If your trash pickup is Wednesday (yellow).....Fall Cleanup is Wednesday, October 19, 2011
 If your trash pickup is Thursday (green).....Fall Cleanup is Thursday, October 27, 2011
 If your trash pickup is Friday (red).....Fall Cleanup is Friday, October 28, 2011

Items picked up include furniture, household goods, toys, etc. The following items **WILL NOT** be taken:
 No automobile parts
 No tires, metal rims, concrete, bricks, dirt, sod, stones, etc.
 No televisions, electronics or appliances
 No sleep sofas or large sectionals
 No chemicals, paints, liquids, salt, etc.
 No stumps, 4 x 4's, railroad ties, large lumber, etc.
 All bundles (shrubs, twigs and small wood, etc.) must be tied and bundled securely (36 inches long and 18 inches in diameter) no larger

The weight limit must not exceed 35 lbs. per item.
 No more than a small pick up load per household
 Please see Recycling Drop-Off Center insert

Recycling Schedule 2011

JANUARY							FEBRUARY							MARCH						
S	M	T	W	T	F	S	S	M	T	W	T	F	S	S	M	T	W	T	F	S
						1			1	2	3	4	5			1	2	3	4	5
2	3	4	5	6	7	8	6	7	8	9	10	11	12	6	7	8	9	10	11	12
9	10	11	12	13	14	15	13	14	15	16	17	18	19	13	14	15	16	17	18	19
16	17	18	19	20	21	22	20	21	22	23	24	25	26	20	21	22	23	24	25	26
23	24	25	26	27	28	29	27	28						27	28	29	30	31		
30	31																			

APRIL							MAY							JUNE						
S	M	T	W	T	F	S	S	M	T	W	T	F	S	S	M	T	W	T	F	S
					1	2	1	2	3	4	5	6	7				1	2	3	4
3	4	5	6	7	8	9	8	9	10	11	12	13	14	5	6	7	8	9	10	11
10	11	12	13	14	15	16	15	16	17	18	19	20	21	12	13	14	15	16	17	18
17	18	19	20	21	22	23	22	23	24	25	26	27	28	19	20	21	22	23	24	25
24	25	26	27	28	29	30	29	30	31					26	27	28	29	30		

JULY							AUGUST							SEPTEMBER							
S	M	T	W	T	F	S	S	M	T	W	T	F	S	S	M	T	W	T	F	S	
					1	2			1	2	3	4	5	6					1	2	3
3	4	5	6	7	8	9	7	8	9	10	11	12	13	4	5	6	7	8	9	10	
10	11	12	13	14	15	16	14	15	16	17	18	19	20	11	12	13	14	15	16	17	
17	18	19	20	21	22	23	21	22	23	24	25	26	27	18	19	20	21	22	23	24	
24	25	26	27	28	29	30	28	29	30	31				25	26	27	28	29	30		
31																					

OCTOBER							NOVEMBER							DECEMBER						
S	M	T	W	T	F	S	S	M	T	W	T	F	S	S	M	T	W	T	F	S
						1			1	2	3	4	5					1	2	3
2	3	4	5	6	7	8	6	7	8	9	10	11	12	4	5	6	7	8	9	10
9	10	11	12	13	14	15	13	14	15	16	17	18	19	11	12	13	14	15	16	17
16	17	18	19	20	21	22	20	21	22	23	24	25	26	18	19	20	21	22	23	24
23	24	25	26	27	28	29	27	28	29	30				25	26	27	28	29	30	31
30	31																			

PURPLE – east of Spring Twp. and west of Mohnton, including: Montrose Manor, Lincoln Park, Thomas Gardens, Welsh Woods, Sugarloaf, Wheaton Heights, Mohnton Lawn, Grings Hill Estates, Rolling Hills, Madison Heights, Colonial Hills, Summerfield, Springdale, Gouglersville, Vermont Rd., Hampshire Rd., Yorkshire Rd., Five Mile Hill, Old Lancaster Pike, Foxfield, Governor Pointe

BLUE – south of Shillington & Mohnton, west of SR 625, including: Hendleton, Wyomissing Rd., Pennwyn, Park Manor, Rose Tree, Welsh Rd., Oregon Rd., Ledgerock Rd., Holly Terrace, Chestnut Hill Farms, Overbrook, Steever's Glen, Cedar Heights, Paumar Estates, Cedar Top Rd., Ashley Run

YELLOW – North side of SR 724, including: Farview, Mifflin Park, Hillaire, Ridge Park, Arcadia, Clover Park, Mt. View Rd., Evergreen Park, Deerfield, Cheriton Place, Pine Hill Estates, Pine Knoll, SR 10 (north of SR 724)

GREEN – south of SR 724, east of SR 625, west of SR 10, including: Freemansville Rd., Mt. Penn Rd., Seven Springs, Hessian Pines, Quail Ridge, Angelica, Vineyards, Imperial Dr., Maple Grove Rd., Candy Rd., Fawn Dr., Stonehill, Hidden Pond, S. 9th Street

RED – south of SR 724, east of SR 10, including: Flying Hills, Valley Stream Rd., Ridgeway Rd.

Western Berks Community Landfill and Recycling Center Recycling Drop-Off Center In Berks County

- Accepts the following materials: *nominal fees apply
- batteries
 - car/lead acid
 - alkaline
 - rechargeable
 - aluminum & tin cans
 - plastic numbered containers
 - glass bottles and jars
 - cardboard
 - paper (all types)
 - newspaper/magazines
 - scrap metal
 - tires*
 - electronics*
 - appliances*
 - cell phones
 - waste vegetable oil
 - printer/toner cartridges
 - eye glasses

Hours: Monday thru Friday 7:00 a.m to 4:00 p.m.
 Saturday 7:00 a.m. to 12:00 noon

Location: 455 Poplar Neck Road, Birdsboro, PA 19508
 Near the intersection of Rt. 724 & 176, across from the Animal Rescue League.

The Recycling Drop-Off Center opened in January 2007.
 We offer recycling drop off services for a wide variety of materials.
 If we cannot accept your material, we will help you find a place that can.

Please call or email for further information:
 610-375-2772, wbcrlc_weighmaster@yahoo.com

If you are involved with a local environmental or recycling project, please contact us, maybe we can help.

NEW

CUMRU TOWNSHIP YARD WASTE FACILITY

Open ONLY on the Second Saturday of the Month
 Yard waste will not be accepted on any other day.

Hours of Operation: January, February and March 10 a.m. until Noon
 April through December 9 a.m. until 1 p.m.

Location: Poplar Neck Road

Please watch Cumru Township website for any schedule changes.

The following items will be accepted: Leaves, Garden Debris, Brush and Bushes, Tree Trimmings, Weeds, Flowers and Garden Plants, Kraft Paper Bags

The following items will NOT be accepted: No Commercial Vehicles, No Stumps, **No Grass**, No Plastic Bags, No Root Balls, No Treated or Painted Wood, No Railroad Ties, No Tree Branches larger than 5 feet long and 6 inches in diameter, **NO GLASS OR TRASH**

Fines of up to \$300 will be issued for illegal dumping. Open ONLY to residents of Cumru Township, identification will be required! No commercial vehicles are allowed. The site will be patrolled by police and is under video surveillance.

